



AVISHA

Human Resources Solution

ABOUT US

Introduction of Avisha
Human Resources Outsourcing
Services

Avisha Human Resources Solution was established independently by Ms. Irawati Mukhlas in Jakarta on 2002. She started this business that developed very well, that's why she built the PT Avisha Citra Mandiri, that is one of the members of Avisha that specializes in Human Resources Solution Services. Since its establishment AVISHA Human Resources Solution continues to be the leader Outsourcing Service Provider for clients in many different industries such as: Hospitality (Hotel), Food and Beverage, Retail, Logistic, Telecommunications, IT, Manufacturing and other industries.

VISION

To be a leader in Human Resources business in Indonesia

MISSION

Meanwhile our mission is to provide the best services for our clients by providing the best quality candidates and also give the best opportunities for our candidates

OUR SERVICE

Executive Search

in Executive Search Division, we are providing client' needs for contract and permanent employee. Our Consultant are very well trained for understanding of costumer needs, which allows them to help client for looking the right candidate that having many experiences in solid organization. Our consultant will help you to delivering a consistently high level of services

OUTSOURCING

The rapid growth in business landscape becomes increasingly complex and competitive, more companies nowadays are focusing on their competencies. Outsourcing company for labor providers has become a solution to control costs. maximize resources availability, and gain competitive advantage. Our strategic approaches is by providing flexibility and cost effective of the highest quality for our clients

OUR SERVICE AREA

ACEH
SUMATERA
AREA
PADANG
PALEMBANG
BATAM
JAMBI
LAMPUNG
PEKANBARU

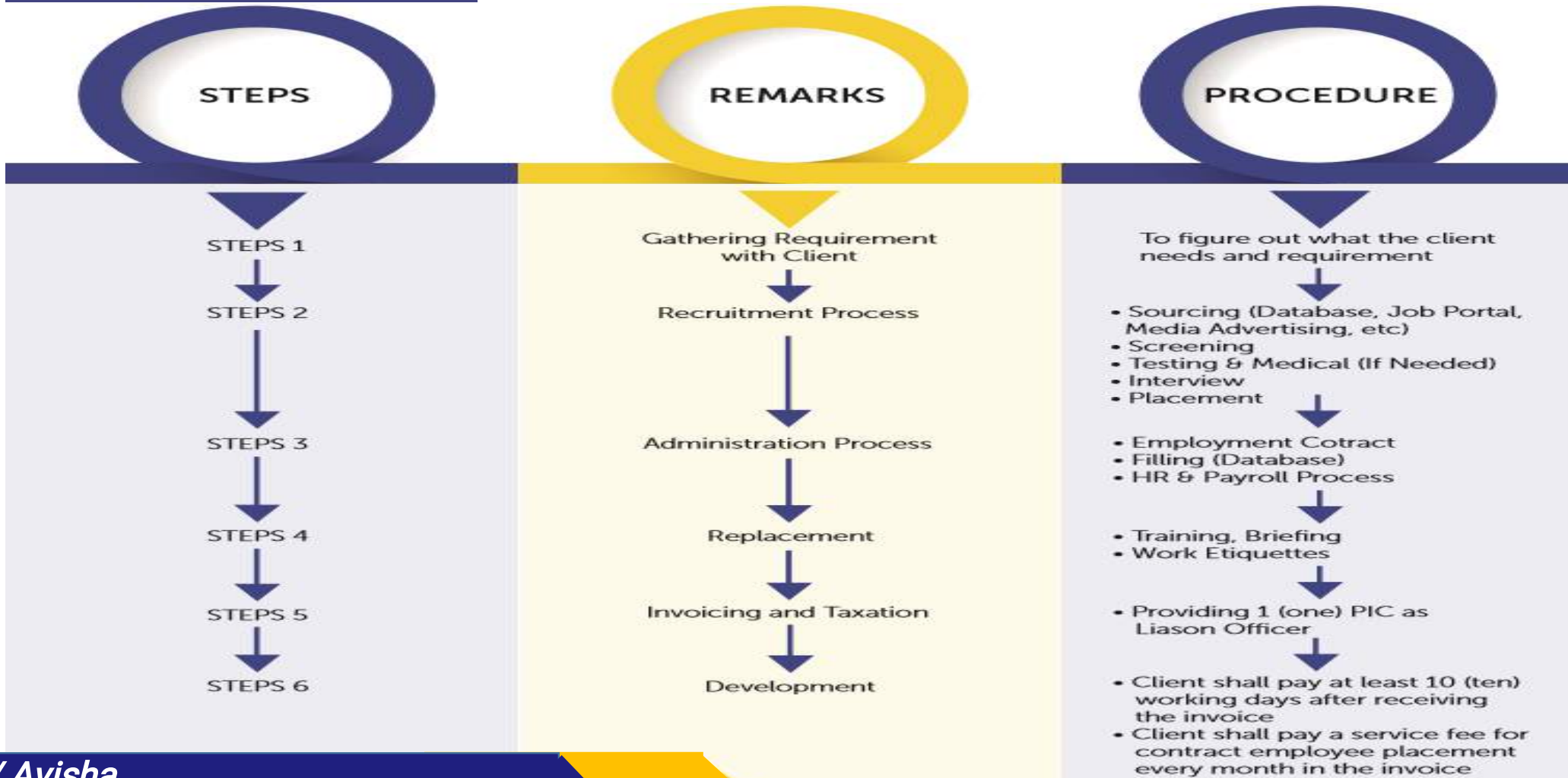
KALIMANTAN
AREA
BALIKPAPAN
PONTIANAK
SAMARINDA
BANJARMASIN

SULAWESI
AREA
MANADO
MAKASSAR
GORONTALO
PALU

ALL AREA IN
JAWA

BALI, NTB,
NTT

MECHANISM



CANDIDAT DATA BASE

SEARCH RESOURCES



Website



Social Media



University Channeling

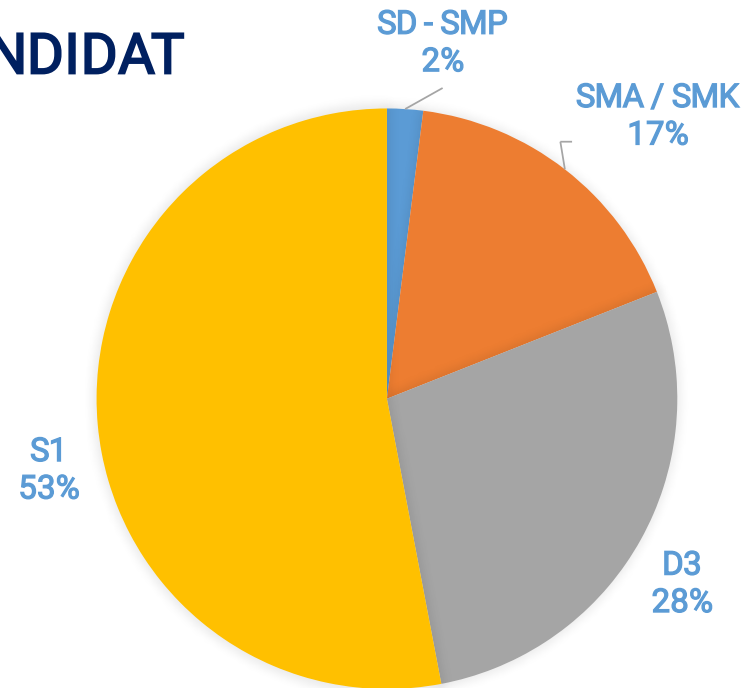


Job Fair

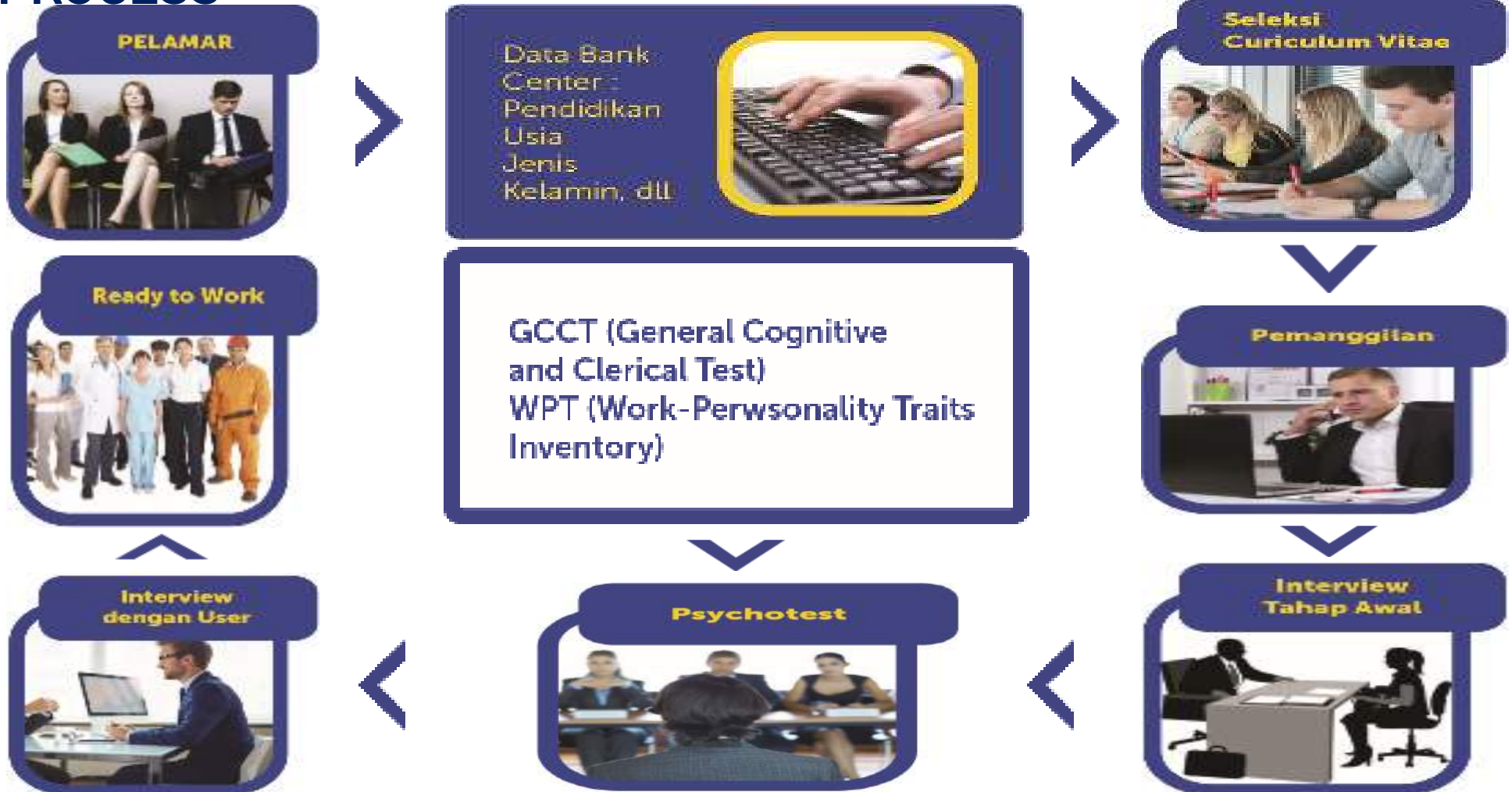


Leaflet/Poster/Brochure

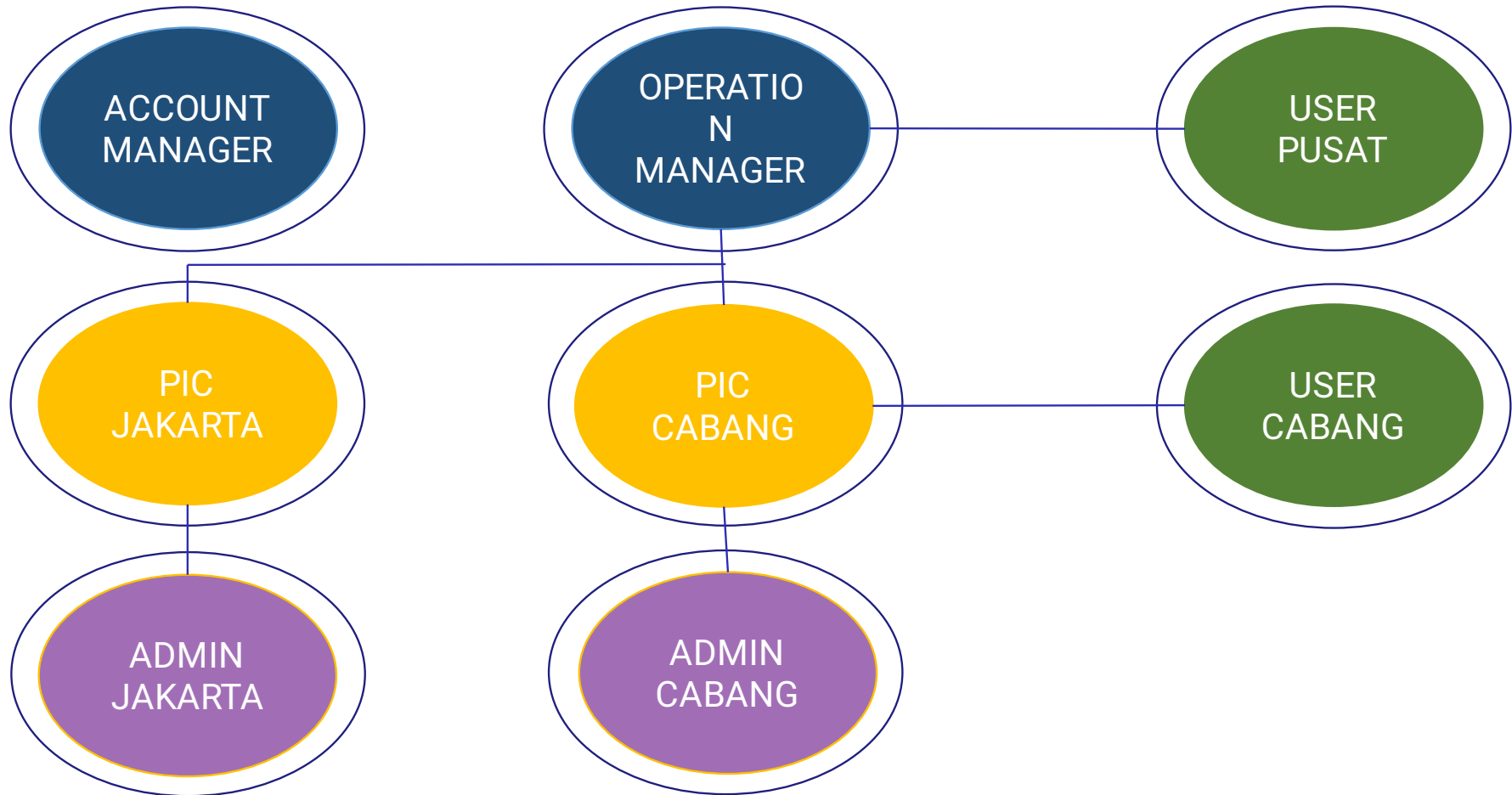
CANDIDAT



RECRUITMENT PROCESS



STRUCTURE PROJECT



JOB CATEGORY

List Categories of Personnel Available for Permanent and Contract Team:

Accounting	General Business	Other
Admin & Clerical	General Labor	Pharmaceutical
Automotive	Government	Professional Services
Banking	Grocery - Purchasing	Procurement
Biotech	Health Care	QA - Quality Control
Broadcast - Journalism	Hotel - Hospitality	Real Estate
Business Development	Human Resources	Research
Construction	Information Technology	Restaurant - Food Service
Consultant	Installation - Maint - Repair	Retail
Customer Service	Insurance	Sales
Design	Inventory	Science
Distribution - Shipping	Legal	Skilled Labor - Trades
Education - Teaching	Legal Admin	Strategy - Planning
Engineering	Management	Supply Chain
Entry Level - New Grad	Manufacturing	Telecommunications
Executive	Marketing	Training
Facilities	Media - Journalism - Newspaper	Transportation
Finance	Nonprofit - Social Services	Warehouse
Franchise	Nurse	

OUR CLIENT

Shangrilla Hotel & Residence
Mandarin Oriental Hotel
The Westin Hotel
Raffles Hotel
Jakarta Aquarium Indonesia
Grand Hyatt Jakarta
Crown Worldwide
Benakat Integra
Dimension Data
Sicpa Peruri Sekurink
DB Schenker
Aneka Infocom
Panasonic Indonesia
Kamikaze Karaage
NISP Sekuritas
Parastar Group
JLL, DBS, and PTBC
PSI Group
Caraka Yasa Logistik

Oromonth Symphony
Bintang Sedayu Makmur
PAZ AC Indonesia
Alfa Transraya
DHL Excel Supply Chain
Astra International
Angkasa Group
PT Honda Trading Indonesia
PT Karunia Berca Indonesia
PT Indo Tambang Raya
PT Inter Pacific Citra
PT Tiga Raksa Satria Tbk
PT Sanggar Sarana Baja
PT Metropolitan Land
PT Caraka Yusa Logistic
PT SSCX International
PT Brother International Sales
PT Pancar Buana Terang (Aeolus Tyle)
PT Cipta Mapan Logistic (Linc Group)

PT Fastratra Buana
PT Musi Hutan Persada
PT Indopharin Jaya
PT Ton Metall Technology
PT Petro Sea, Tbk
PT Kuroda Indonesia
PT Schneider Electric Manufacture
Yayasan Pendidikan Bunda Mulia
PT Brighten & Richness Technology
PT Diebold Indonesia
PT Samsung Electronic Indonesia
PT MAA Life Insurance
PT Parametric Solusi Integrasi
PT DHI Excel Supply Chain Indonesia
Panen Lestari Group (SICO & OGDHAI I)
PT Kapal Api Global
PT Suzuki Indomobil International

PT Trust Artha Futures
ROP Balerie Group
APL Indonesia
Patinna Group (KSO Pertamina)
PT Quartee Technologies
PT Design Ace
PT Pandu Selamat Utama
PT Lancar Sentral Logistic
PT Pacific Indomas
PT Sony Indonesia
18th Residence Rasuna
PT SSCX International
Alun-alun Indonesia (IOTUS)
Multi Nusantara Karya
Telindo Nusantara
PT Scheiner Petrolog Utama
PT Genting Bernard Plantation
Tanjung Enim Lestari Pulp

Shangri-La hotel Jakarta

NO	DEPARTMENT	TOTAL KARYAWAN
1	Service.	1
2	Housekeeping	39
3	Health club	8
4	Laundry & valet	10
5	Horizon club	2
6	Florist	1
7	Chi Spa	5
8	Fb service administrative	3
9	Banquet/catering	59
10	Shang palace service	4
11	Stewarding	34
12	Banquet/main preparation	7
13	Butchery	1
14	Pastry	12
15	Garde manger	7
16	General prep-f&b misc	1

NO	DEPARTMENT	TOTAL KARYAWAN
17	Staff restaurant	10
18	B.a.t.s kitchen	2
19	Lobby lounge kitchen	3
20	Rosso Preparation	3
21	Rosso Service	5
22	Satoo Preparation	11
23	Satoo Service	1
24	Personnel	8
25	Accounting office	1
26	Purch,stores&cost control	2
27	Security	62
28	Information Technology	1
29	Engineering	3
30	Operations & repairs	1
31	Preventative maint.	21
Grand Total :		193




Shangri-La hotel
 JAKARTA



MANDARIN ORIENTAL JAKARTA

NO	DEPARTEMEN	TOTAL KARYAWAN
1	BANQUET KITCHEN	52
2	BANQUET SERVICE	13
3	CINAMMONS (F&B SERVICE)	2
4	CINAMMONS (KITCHEN)	3
5	EMPLOYE ROOM DINE	1
6	FITNESS & WELLNESS	4
7	FRONT OFFICE	2
8	HOUSE KEEPING	4
9	IRD	6
10	MO MAKAN	1
11	PASTRY	2
12	PURCHASING	1
13	SECURITY	3
14	STEWARD	21
TOTAL		115



RAFFLES HOTEL JAKARTA

NO	DEPARTEMEN	TOTAL KARYAWAN
1	ART CAFÉ KITCHEN	5
2	ART CAFÉ SERVICE	6
3	BANQUET KITCHEN	4
4	BANQUET SERVICE	89
5	COMMISARY KITCHEN	3
6	FRONT OFFICE	2
7	HK-BANQUET	8
8	HK-RESIDENCE	4
9	HOUSE KEEPING	34
10	LAUNDRY	15
11	PASTRY	9
12	PURCHASING	1
13	SPA & FITNESS	5
14	STEWARD	14
15	UNO CAFÉ	4
	TOTAL	203



THE WESTIN JAKARTA
JAKARTA HOTELS

INDONESIA



THE WESTIN JAKARTA

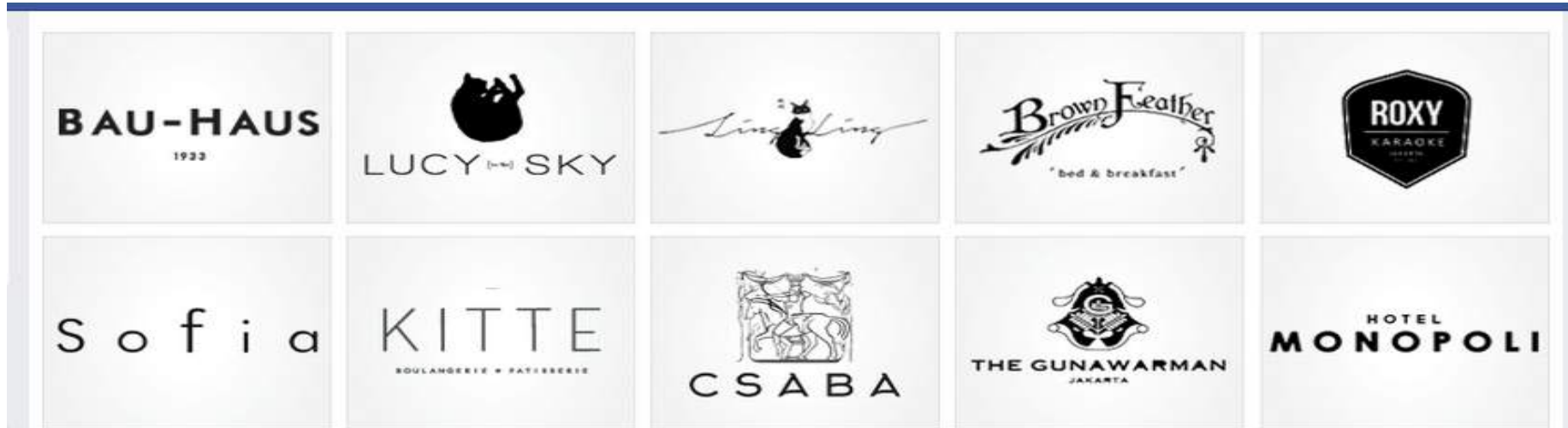
NO	DEPARTMENT	TOTAL Karyawan
1	BANQUET	47
2	ENGINEERING	9
3	EXECUTIVE OFFICE/ DRIVER	1
4	F & B SERVICE - SEASONAL TASTE	32
5	FINANCE	3
6	FRONT OFFICE	8
7	HENSHIN F&B SERVICE	22
8	HOUSEKEEPING	65
9	IRD	1
10	KITCHEN - CANTEEN /BANQUET	3
11	KITCHEN – HENSHIN	3
12	KITCHEN - SEASONAL TASTE	23
13	KITCHEN BANQUET	2
14	KITCHEN BUTCHER	2
15	KITCHEN COMISSARY /COLD KITCHEN	12
16	LAUNDRY	5
17	PASTRY BAKERY	17
18	SALES & MARKETING	1
19	SPA & RECREATION	8
20	STEWARDING	51
21	STEWARDING - HENSHIN	5
Grand Total :		273

Grand Hyatt Jakarta Hotel



NO	DEPARTEMENT	TOTAL KARYAWAN
1	Club Olympus	23
2	Engineering	8
3	Front Office	10
4	HK - Florist	1
5	House Keeping	51
6	HRD	1
7	Security	1
8	Carpenter	22
9	Cheers Attendant	3
10	Cook Helper	6
11	C'S	1
12	Florist	2
13	Grand Café Kitchen	21
14	Operator	1
15	Pastry	6
16	Steward	63
17	Waiter	72
18	Waitress	22
TOTAL		314

SYAH ESTABLISHMENT GROUP



NO	DEPARTEMENT	TOTAL KARYAWAN
1	House Keeping - Public Area	50
2	Kitchen	60
3	Banquet	480
4	Front Office	30
TOTAL		620

BRANZ SIMATUPANG APARTMENT



Departement	Total Karyawan
Supervisor Tenant Relation	1
Tenant Relation Office	2
Cashier	2
HR GA	1
Vendor & Facility Supervisor	1
Concierge	4
Total :	11

PT. SARI BOGA NUSANTARA



Geprek benu (wijaya, , kalimalang, cirendeu, ciracas, bandung, sukabumi, solo, Surabaya) Bigben Kopi (tebet, Surabaya) Mecah Piting (Tebet, Depok) Bakso Benu Tebet	Total Karyawan
waiter	67
kitchen	111
SPV	15
Admin	22
Kasir	29
Barista	9
Security	17
Total	270

AYANA HOTEL



Department	Total Karyawan
Housekeeping	13



PT. AVISHA CITRA MANDIRI
SOHO PANCORAN BUILDING

Jl. Let. Jend. MT. Haryono Kav. 2-3 Noble Tower 10th Fl
Suites 05 South Jakarta. Phone : (021) 80625877

WWW.AVISHA.CO.ID